

Flow to 15 GPM
Head to 160 ft.



Type HP

**CENTRIFUGAL
MOTOR PUMPS**
Flows to 15 GPM
Heads to 160 Feet

MATERIALS
Bronze (HP75BN)
Kanigen Plated (HP75KN)
CPVC (HP75CN)

APPLICATIONS

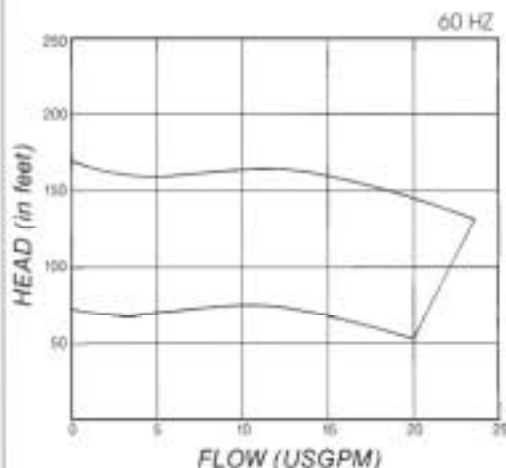
- **INDUSTRY**—Circulating chilled water, booster pumps, sprinkler pumps, deionized water.
- **O.E.M.**—Booster pumps, chiller pumps for various uses, air conditioning, Laser coolers.

FEATURES

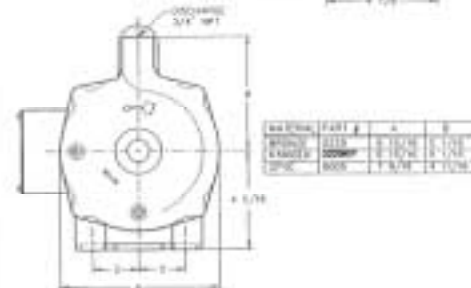
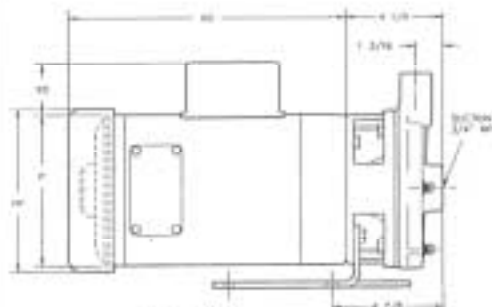
- **SIZE:** 3/4" x 3/4" x 6"
- Compact, close coupled design
- **MOTORS:**
56JC Threaded shaft motors,
1/3 HP-2HP, 3600 RPM, single
phase or three phase, drip proof
or TEFC
- Bronze volute, Kanigen plated
volute or molded CPVC volute.
- Molded CPVC impeller on all
models.
- Mechanical Seal: 5/8" Type 6 Buna,
Carbon vs. Ceramic standard.
- T.21 and T.36 Diplo (non-metallic)
seals optional.
- End bell gasket isolates cast iron
motor bracket from liquid flow.

ALSO AVAILABLE

- FRAME MOUNTED



Curves for reference only. See engineering curves for final selection.



HP75 **DISCHARGE** **SUCTION**
 3/4" NPT 3/4" NPT

NOTE: Motor dimensions will vary by motor and make. Dimensions are to be used for reference only.

**PRICE
PUMP CO.**

21775 Eighth St. East
P.O. Box 9
Sonoma, CA 95476
(707) 938-8441
FAX: (707) 938-0764
www.pricepump.com
email: sales@pricepump.com

High Flow to 15 GPM
High Head to 160 ft.

Also Available:



*HP75P
Frame Mounted*



HP75CN



HP75KN

Type HP



TECHNICAL INFORMATION

CATEGORY	HP75BN	HP75KN	HP75CN
Min. Recommended Flow/GPM	1/2 GPM	1/2 GPM	1/2 GPM
Max. Solid Size	.03"	.03"	.03"
Max. Working Pressure*			
T.6 (std.), T.36 (optional)	75 PSI	75 PSI	75 PSI
T.21 (optional)	150 PSI	150 PSI	150 PSI
Maximum Temperature*	140° F	140° F	140° F

*With Standard Seal and Gasket—Temperature limit will also vary according to liquid pumped. Contact Factory for higher Pressure/Temperature options.

MATERIALS OF CONSTRUCTION

Volute	Bronze	Kanigen Plated	CPVC
	85-5-5-5	Bronze	
Impeller Bracket	CPVC	CPVC	CPVC
	Gray	Gray	Gray
	Cast Iron Class 30	Cast Iron Class 30	Cast Iron Class 30
Fasteners	18-8 S.S.	18-8 S.S.	18-8 S.S.
Gasket	EPR	EPR	EPR