



CD150MDSS  
Shown

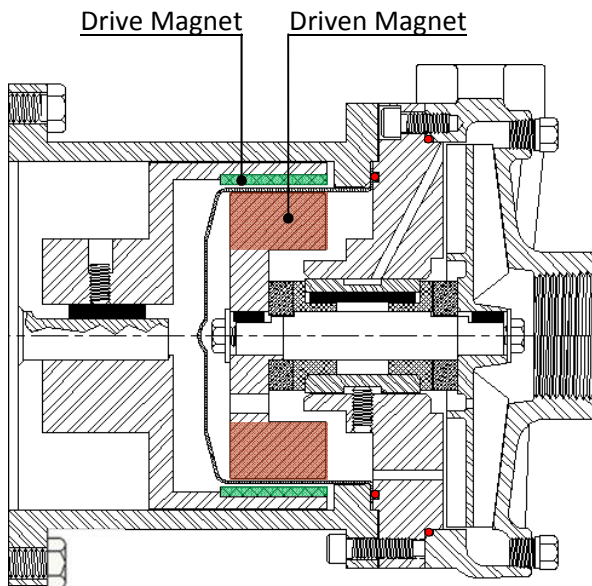
## Features

- Leak-proof, magnetic drive
- Eliminates seals to reduce friction wear
- High temperature capacity
- Threaded pump connections

## Applications

- Toxic or Explosive Fluids
- Aggressive Chemicals
- Biodiesel Production
- Water Treatment
- Galvanic Processes, Surface Treatments
- Scrubber Applications
- Pharmaceutical Industry
- Vapor Degreasers

## Cross Section - Magnets



## CD

### Pump Models

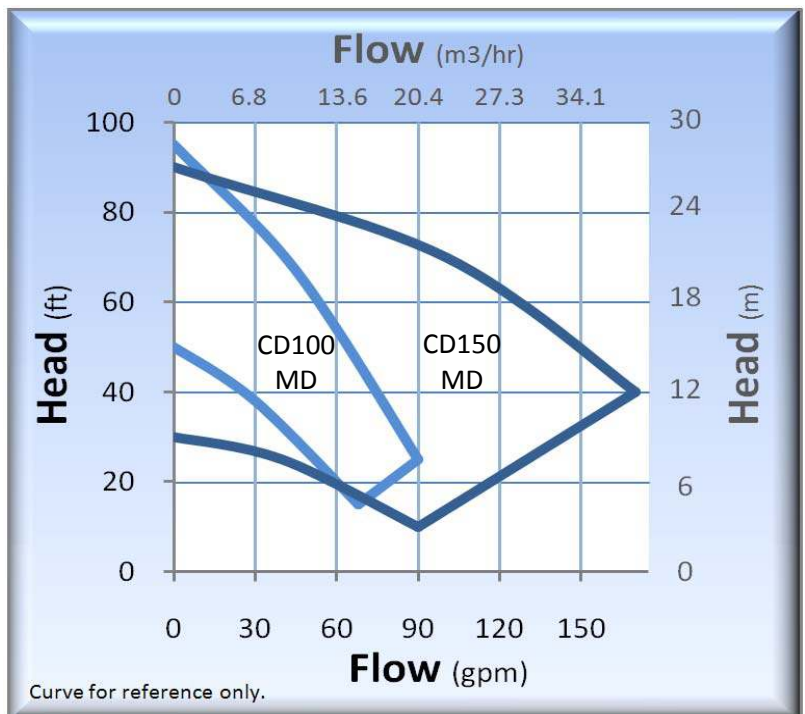
- CD100MDSS – 316 Stainless Steel
- CD150MDSS – 316 Stainless Steel

## Standard Specifications

- CD100MD Discharge 1" FNPT, Suction 1-1/4" FNPT
- CD150MD Discharge 1-1/2" FNPT, Suction 2" FNPT
- Maximum Impeller Diameter: 4.94"
- Impeller Material: 316SS
- Motor: NEMA C Face
- O-rings: Viton
- Bushings: Carbon Graphite
- Thrust Washers: Ceramic
- Drive Magnets: Samarium Cobalt

*Note: Call factory for additional options*

## Performance Curve – 60 Hz



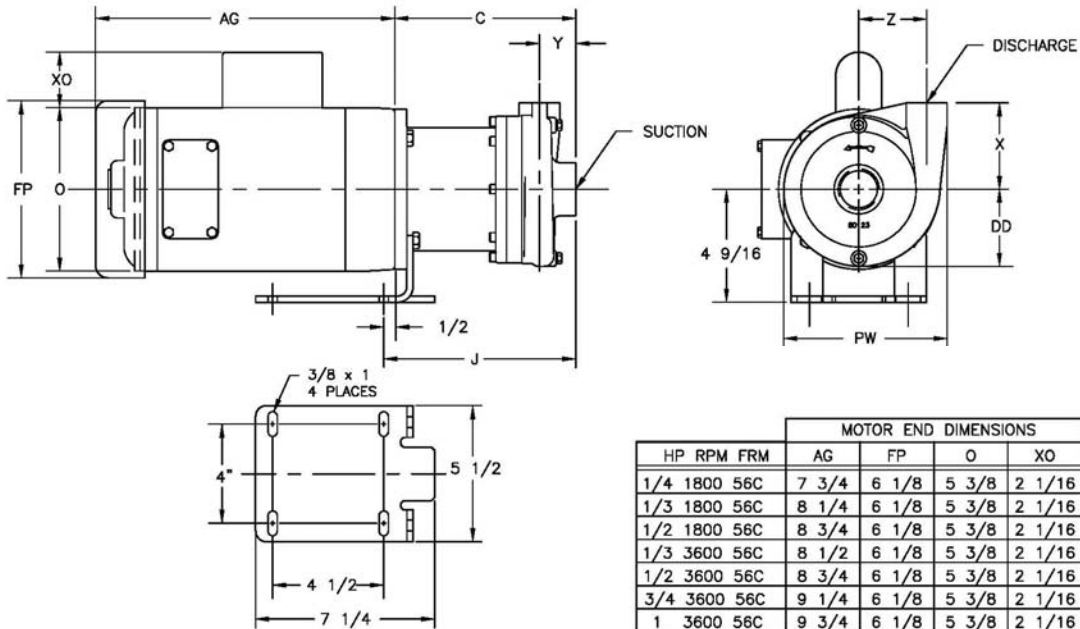
# CD (MAG DRIVE)

Technical Information	
Max Flow (CD100MD)	90 GPM (20 m3/hr)
Max Flow (CD150MD)	190 GPM (43 m3/hr)
Max Head	100 feet (30.5 m)
Min. Flow (CD100MD)	12 GPM (2.7 m3/hr)
Min. Flow (CD150MD)	25 GPM (5.7 m3/hr)
Max Working Pressure	300 PSI (21 bar)
Max Temp.	350°F (177°C)*

Materials of Construction	
CDMD	SS
Volute	316 Stainless Steel
Impeller	316 Stainless Steel
Bracket	316 Stainless Steel
Fasteners	316 Stainless Steel
O-ring	Viton (STD), Teflon, Buna, EPR, Neoprene, Kalrez, & Fluoro-Silicon
Shaft	316 Stainless Steel (STD), Tungsten Carbide Coated
Bushings	Carbon (STD), Silicon Carbide
Thrust Washers	Ceramic (STD), Silicon Carbide
Magnet Cup	316 Stainless Steel
Magnets	Samarium Cobalt

\* Temperature limits will vary depending on O-ring material and type of liquid being pumped.

## Dimensions (CD Mag-Drive)



**Note:**  
Motors above 3 HP require VFD or soft starter.  
Motor dimensions are for reference only and will vary by model and make.  
ALL DIMENSIONS HAVE BEEN ROUNDED TO THE NEAREST 1/16".

	PUMP END DIMENSIONS								
	C	DD	PW	X	Y	Z	J	SUCTION	DISCHG
CD100 SS MAG	7 5/8	3 1/8	6 5/8	3 1/2	1 3/8	2 3/4	8 1/8	1 1/4"	1"
CD150 SS MAG	8 5/8	4 1/16	7 15/16	3 13/16	2 1/8	3 1/8	9 1/8	2"	1 1/2"



21775 Eighth Street East  
Sonoma, CA 95476-0329  
MAIN (707) 938-8441  
TOLL FREE (800) 345-7867  
FAX (707) 938-0764  
E-mail: [sales@pricepump.com](mailto:sales@pricepump.com)  
Website: [www.pricepump.com](http://www.pricepump.com)

Contact factory for special pump configurations,  
same day, and next day delivery options.



Rev. Date: May 2012