

P95AI
Shown

Features

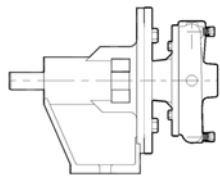
- **Pump Design** – Compact, close coupled
- **Pump End** – Lightweight design
- **Cost** – Economical design

Applications

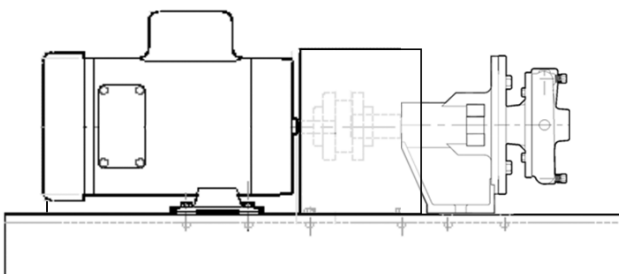
- Street Sweeper Pumps
- Engine Coolant Pumps
- Carpet Cleaners
- Bilge Pumps
- Bait Tank Pumps
- Brine Circulation
- Circulation / Filtration
- General Purpose Pumps

Optional Configurations

- **Street Sweeper Mounting:**
- **Power Frame Mounting:**



- **Long-Coupled Mounting:**



P50-150

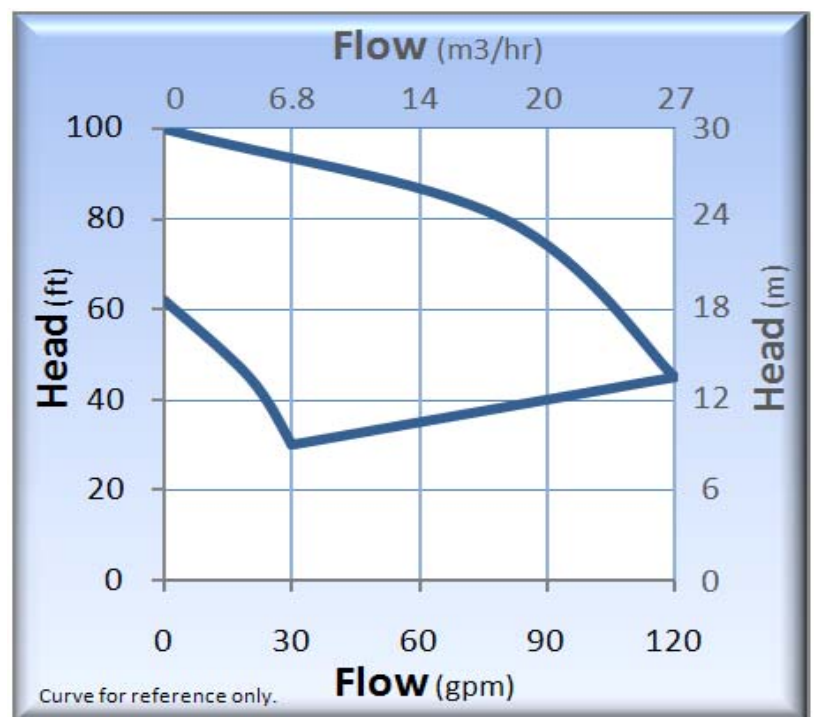
Pump Volute / Impeller Materials

- P (AI) – Cast Iron / Cast Iron
- P (BF) – Cast Iron / Bronze
- P (AB) – Bronze / Bronze

Standard Specifications

- P50 Discharge 1/2" FNPT, Suction 3/4" FNPT
- P75 Discharge 3/4" FNPT, Suction 1" FNPT
- P95 Discharge 1" FNPT, Suction 1-1/4" FNPT
- P100 Discharge 1" FNPT, Suction 1-1/4" FNPT
- P150 Discharge 1-1/2" FNPT, Suction 2" FNPT
- Maximum Impeller Diameter (P50-95): 3.94"
- Maximum Impeller Diameter (P100-150): 4.94"
- Mechanical Seal:
 - Single, 5/8" Type 6A Buna, Carbon vs. Ceramic (P50-95)
 - Single, 3/4" Type 6A Buna, Carbon vs. Ceramic (P100-150)
- Note: Additional seal options available
- Gasket: Vegetable Fiber

Performance Curve – 60 Hz



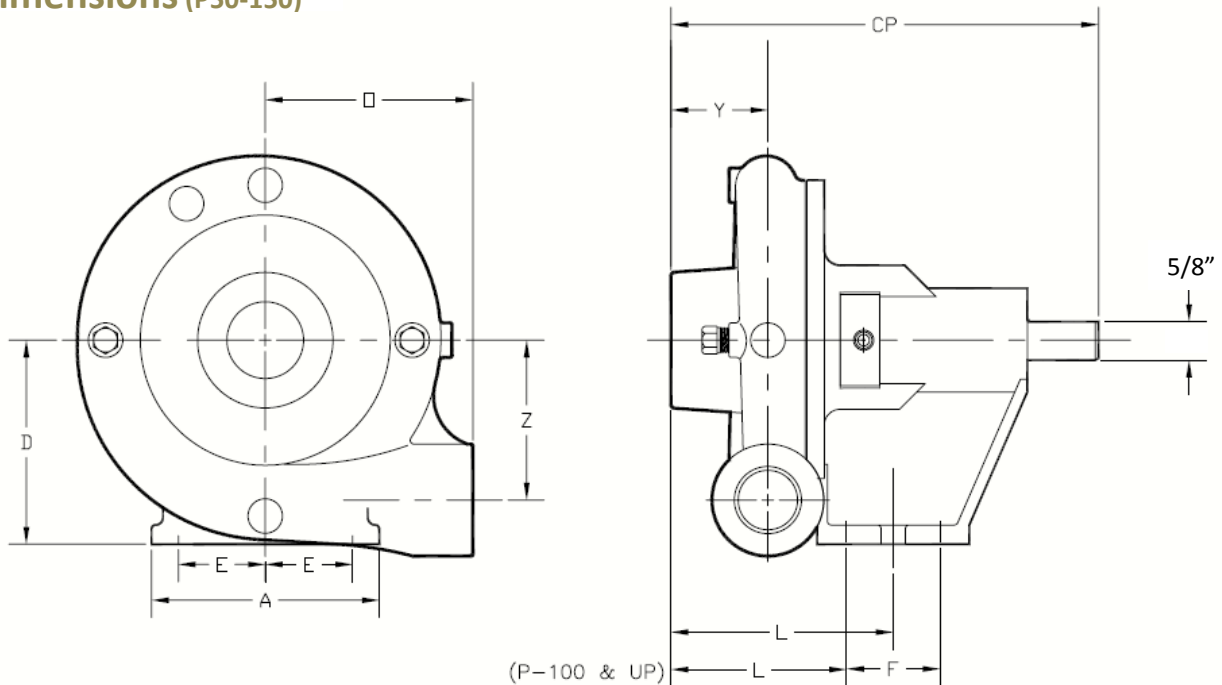
P50-150

Technical Information	
Max Flow	120 GPM (27.3 m3/hr)
Max Head	100 feet (30.5 m)
Min. Recommended Flow	5 GPM (1.1 m3/hr)
Max Solid Size	0.180" (4.6 mm)
Max Working Pressure (Type 6A Seal)	75 PSI (5.2 bar)
Max Temp.	200°F (93°C)*

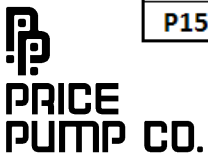
Materials of Construction			
P	AI	BF	AB
Volute	Cast Iron	Cast Iron	Bronze
Impeller	Cast Iron	Bronze	Bronze
Bracket	Cast Iron	Cast Iron	Bronze
Gasket	Veg. Fiber	Veg. Fiber	Veg. Fiber
Fasteners	Plated Steel	Plated Steel	18-8 SS

* Temperature limits are based on standard seal and gasket materials, and will vary according to the liquid being pumped.

Dimensions (P50-150)

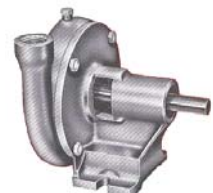


MODEL	PUMP END DIMENSIONS									PIPE THREAD - NPT	
	CP	O	Y	A	D	E	F	L	Z	DISCHARGE	SUCTION
P50	6-5/16	5-3/4	1-1/8	3-9/16	3-1/8	1-1/2	-	3-5/16	2-1/2	1/2"	3/4"
P75	6-5/8	6-1/2	1-3/8	3-9/16	3-1/8	1-1/2	-	3-5/16	2-1/2	3/4"	1"
P95	6-5/8	6-1/2	1-3/8	3-9/16	3-1/8	1-1/2	-	3-5/16	2-1/2	1"	1-1/4"
P100	7-1/2	7-1/2	1-5/8	4-3/16	3-5/8	1-7/8	1-1/2	3-1/2	3-1/8	1"	1-1/4"
P125	7-1/2	7-1/2	1-5/8	4-3/16	3-5/8	1-7/8	1-1/2	3-1/2	3-1/8	1"	1-1/4"
P150	7-1/2	7-1/2	1-5/8	4-3/16	3-5/8	1-7/8	1-1/2	3-1/2	3-1/8	1"	1-1/4"



*Contact factory for special pump configurations,
same day, and next day delivery options.*

21775 Eighth Street East
Sonoma, CA 95476-0329
MAIN (707) 938-8441
TOLL FREE (800) 345-7867
FAX (707) 938-0764
E-mail: sales@pricepump.com
Website: www.pricepump.com



Rev. Date: May 2009