



## XJ400

All Wetted Parts 316SS

### Features

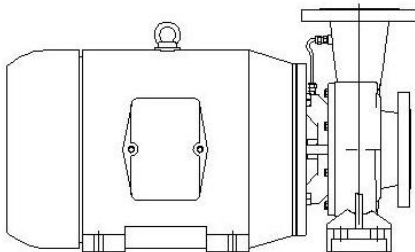
- **Pump Design** – Close Coupled, Compact
- **Standard Seal** – Type 21
- **Construction** – 316 Stainless Steel
- **Flush Options** – Recirculation

### Applications

- Waste Water Treatment
- Municipal Water Treatment
- Acid Mine Drainage
- Frac Water Treatment
- Oilfield Brine
- Chemical Process
- Transfer
- Irrigation / Drainage

### Available Configurations

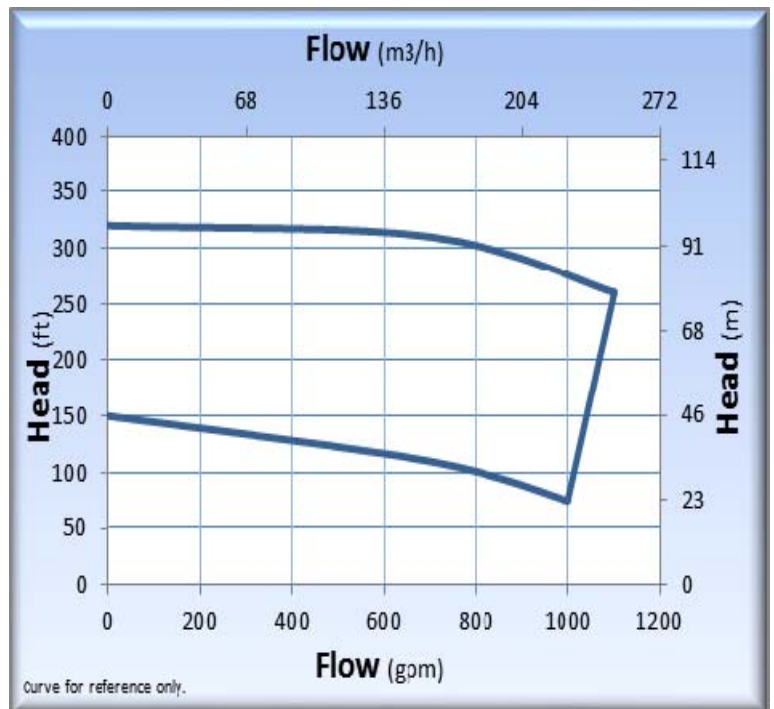
- **Close-Coupled:**



### Pump Specifications

- Suction - 4" Flange, Discharge - 4" Flange  
*Flange specs. - 150 lb, ANSI, Centerline*
- Maximum Impeller Diameter: 8.5"
- Motor: NEMA JM (Multiple motor enclosures available)
- Mechanical Seal:  
*Single, 1-1/2" Type 21 Viton, Carbon vs. Ceramic (SS)*  
*Note: Additional seal options available*
- Bracket Material: 316SS
- Shaft/Shaft Sleeve: 316SS
- Gasket: Teflon

### XJ400 Performance Curve – 60 Hz

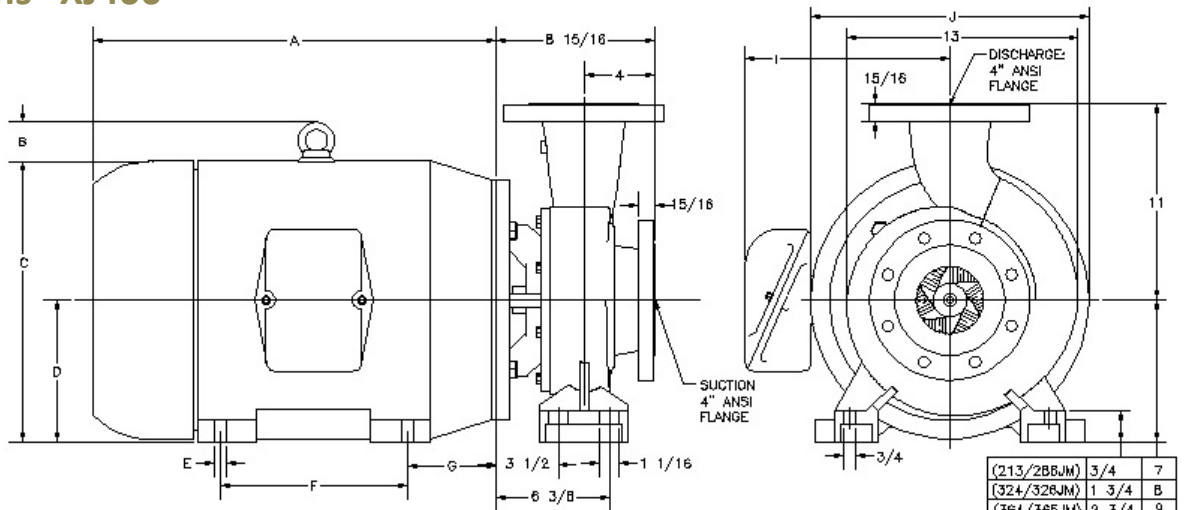


# XJ400

Technical Information		Materials of Construction	
Max Flow	1100 GPM (250 m3/hr)	Volute	316SS
Max Head	320 feet (98 m)	Impeller	316SS
Min. Flow	100 GPM (22.7 m3/hr)	Shaft/Shaft Sleeve	316SS
Max Solid Size	0.44" (11 mm)	Bracket	316SS
Max Working Pressure	(Type 21 Seal)	Gasket	Teflon (PTFE)
	(Type 2 Seal)		
Max Temp.	350°F (176°C)*		

\* Temperature and pressure limits will vary with liquid being pumped.

## Dimensions - XJ400



MOTOR DIMENSIONS

FRAME	A	B	C	D	E	F	G	H	I	J
213/215M	18 5/8	2 5/8	10 5/8	5 1/4	7/16	7	4 1/2	8 1/2	8 1/8	8 9/16
254/256M	7 13/16	2 1/2	11 3/8	6 1/4	1/2	10	5	10	8 3/8	11 5/8
284/286M	21 1/2	2 3/4	13 5/8	7	1/2	11	4 3/4	11	12 1/16	13 1/4
324/326M	25 1/8	3 1/4	16 1/4	8	11/16	12	5 1/4	12 1/2	14 5/8	16 7/8
364/365M	27 3/16	2 3/4	18 1/2	9	11/16	11 1/4	6 9/16	14	16 3/8	18 3/4

NOTE: MOTOR DIMENSIONS WILL VARY BY MODEL AND MAKE. DIMENSIONS ARE TO BE USED FOR REFERENCE ONLY.



21775 Eighth Street East  
 Sonoma, CA 95476-0329  
 MAIN (707) 938-8441  
 TOLL FREE (800) 345-7867  
 FAX (707) 938-0764  
 E-mail: [sales@pricepump.com](mailto:sales@pricepump.com)  
 Website: [www.pricepump.com](http://www.pricepump.com)

Contact factory for special pump configurations,  
 same day, and next day delivery options.



Rev. B Date: July 2012